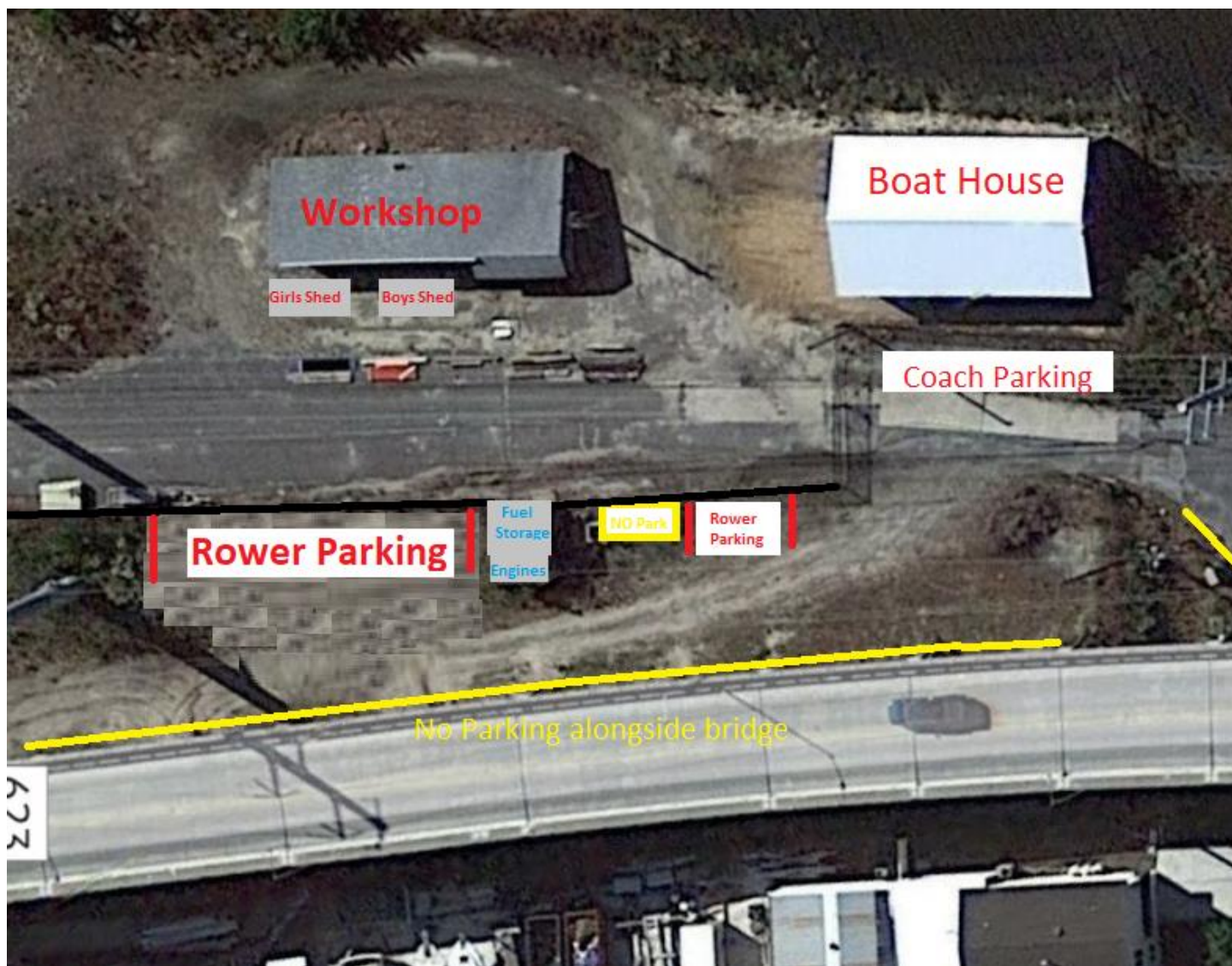


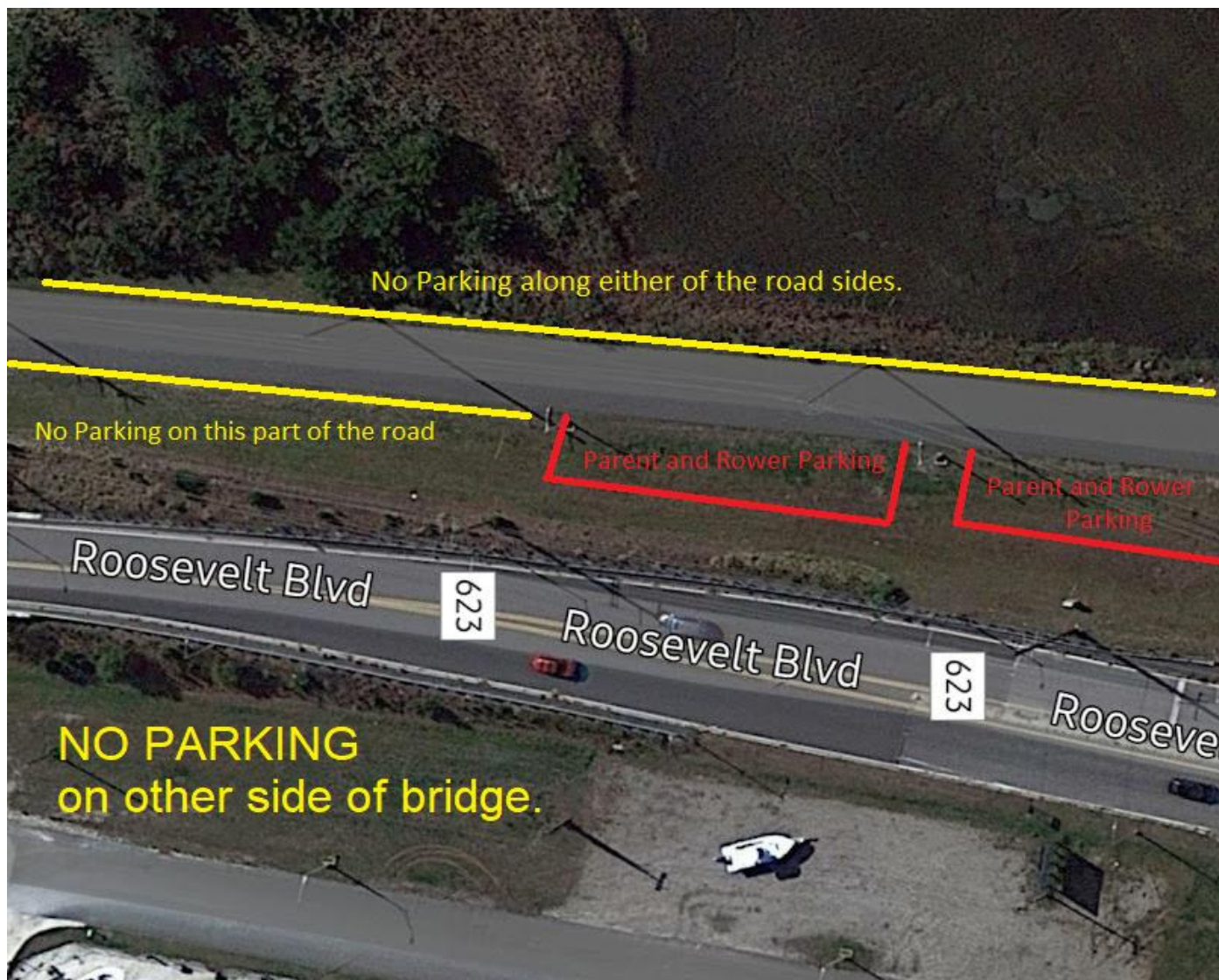


OCHS Crew Parents Booster Crew Boatyard Parking Plan

As per the agreement for the OCHS Crew Boat Yard Lease the following parking must be STRICTLY followed, so that there is NO issues with maintenance of the facility or possible issues with the property lease.

- There are no vehicles allowed inside the fenced in boatyard unless approval is made by the coaches for work being performed.
- There is ABSOLUTELY NO PARKING in the YELLOW AREAS on the maps below. Rowers are to only park in the RED Areas in the provided photos. No Exceptions. Parking under the bridge is strictly forbidden as per Homeland Security and bridge restrictions
- **OCHS Crew Boosters is not responsible for vehicle around the facility and their safety or security.**
- Please make sure all cars unattended are LOCKED.
- The parking is public parking and is not secured





Additional Parent/Spectator Parking on the Ocean City Side of the Bridge. The Municipal Dock is a great viewing area to take photos of your Rower as they are coming into the docks and also see when they get done.

